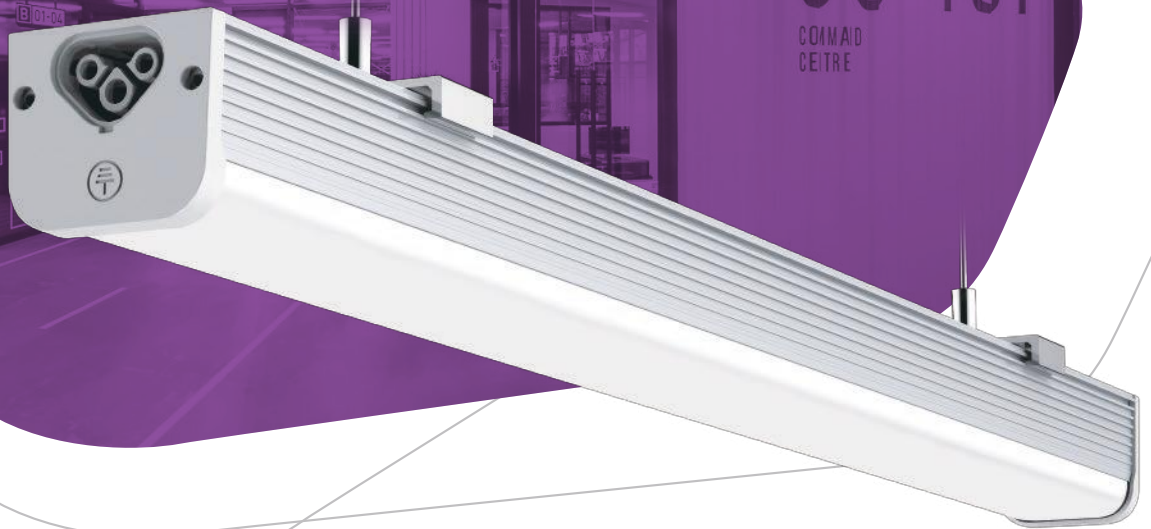


LONYUNG[®]

new T5 BATTEN LIGHT

Professional led lights manufacturer



WATERPROOF ,DUSTPROOF ,IP65
OEM & ODM & PATENT DESIGN



LONYUNG®

FASHION \ DURABLE \ ENVIRONMENTAL PROTECTION
www.lonyung.com



OEM & ODM
Patent Design

A VARIETY OF SIZE SELECTION

Steel Plant, Electric Power Plant, Boat, Stadium



Core Of Science
And
Technology

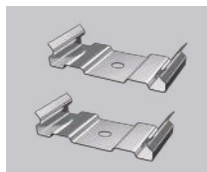


CONNECTION WAY

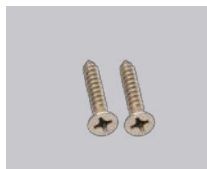
Mode A: Connection Way



Installation Accessories



Mode B: can be connected





LONYUNG®

FASHION \ DURABLE \ ENVIRONMENTAL PROTECTION
www.lonyung.com

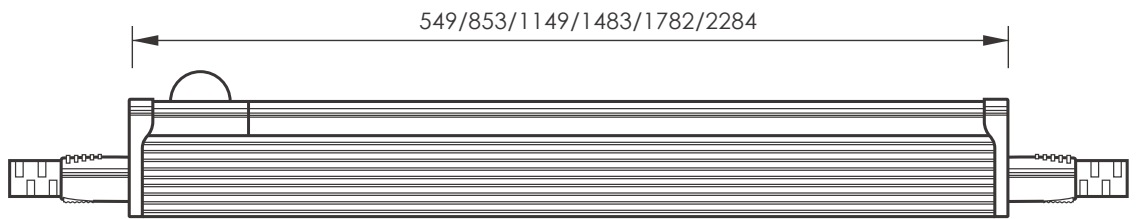
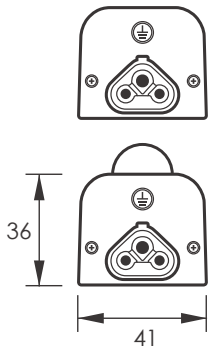
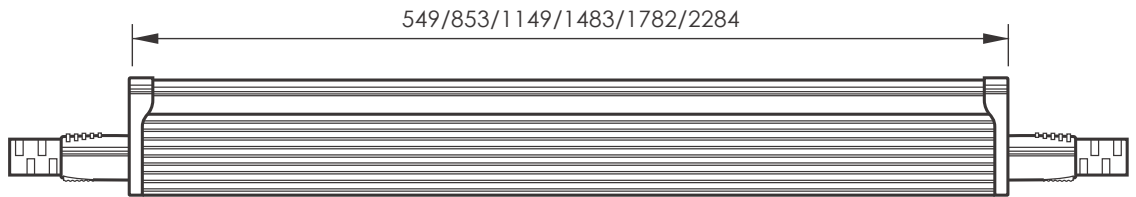
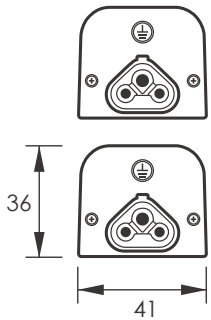


OEM & ODM
Patent Design

PRODUCT LINE DRAWING

Ordinary Light / Induction Lamp

Size: (mm)



SPECIFICATION

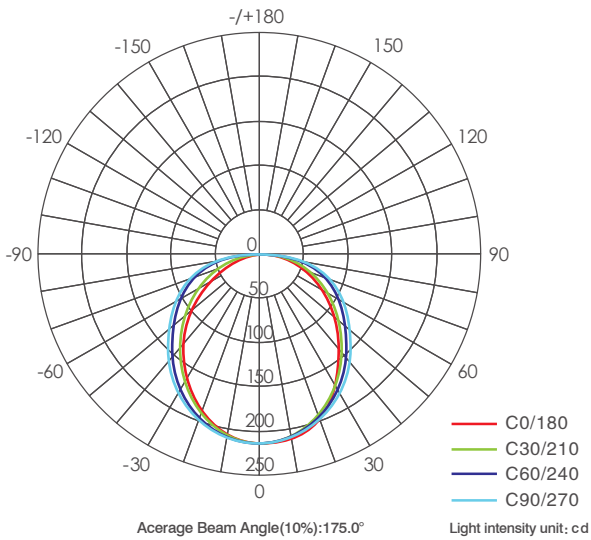
Model	Size	Led	Power	Pc Cover	Luminous Flux(Lm) ±10%		
					WW2700-3200K	NW4000-4500K	CW6000-6500K
LY-T5SL600-15W	549x41x36(mm)/2ft	SMD2835	15W	Frosted	1620	1650	1680
				clear	1920	1950	1980
LY-T5SL900-25W	853x41x36(mm)/3ft	SMD2835	25W	Frosted	2700	2750	2800
				clear	3200	3250	3300
LY-T5SL1200-30W	1149x41x36(mm)/4ft	SMD2835	30W	Frosted	3240	3300	3360
				clear	3840	3900	3960
LY-T5SL1500-40W	1483x41x36(mm)/5ft	SMD2835	40W	Frosted	4320	4400	4480
				clear	5120	5200	5280
LY-T5SL1800-44W	1782x41x36(mm)/6ft	SMD2835	44W	Frosted	4750	4840	4930
				clear	5630	5720	5800
LY-T5SL2400-60W	2284x41x36(mm)/8ft	SMD2835	60W	Frosted	6480	6600	6720
				clear	7680	7800	7920



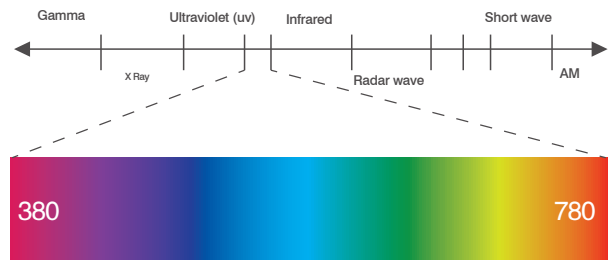
OEM & ODM
Patent Design



Light distribution curve



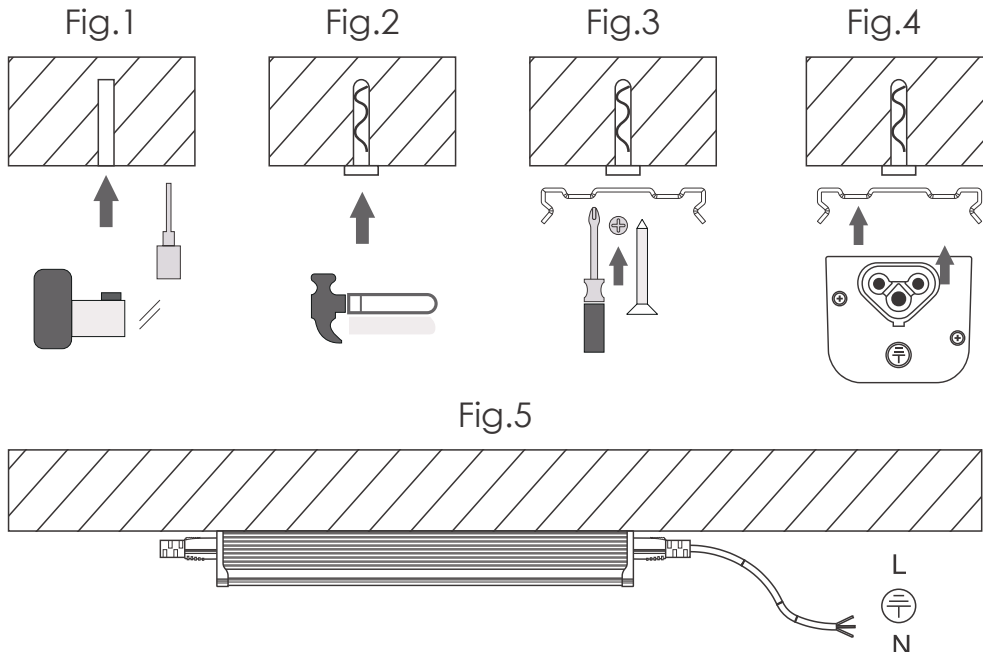
Electromagnetic Spectrum Of Visible Light



INSTALLATION

⚠ Please disconnect the power before installation.

- Step 1: Drill 4 $\varnothing 6\text{mm}$ holes on the ceiling with electric drill. (as Fig.1)
- Step 2: Knock the plastic expansion into the hole which you drill. (as Fig.2)
- Step 3: Install the buckle into the plastic expansion. (as Fig.3)
- Step 4: Fix the tube into the buckle. (as Fig.4)
- Step 5: Connect the power. (as Fig.5)



LONYUNG®

FASHION \ DURABLE \ ENVIRONMENTAL PROTECTION
www.lonyung.com



OEM & ODM
Patent Design

PACKING INFORMATION

Model	Size	Carton Size	Packing
LY-T5SL600-15W	549x41x36(mm)/2ft	710x260x220(mm)	20pcs
LY-T5SL900-25W	853x41x36(mm)/3ft	1015x260x180(mm)	20pcs
LY-T5SL1200-30W	1149x41x36(mm)/4ft	1310x260x180(mm)	20pcs
LY-T5SL1500-40W	1483x41x36(mm)/5ft	1645x210x180(mm)	16pcs
LY-T5SL1800-44W	1782x41x36(mm)/6ft	1945x210x180(mm)	16pcs
LY-T5SL2400-60W	2284x41x36(mm)/8ft	2460x175x160(mm)	9pcs

STORAGE CONDITIONS

Before Opening The Package:

The LEDs should be kept at 30°C or less and 70%RH or less. The LEDs should be used within a year. When storing the LEDs, moisture proof packaging with a desiccant material (silica gel) is recommended.

After Opening The Package:

The LEDs should be kept at 30°C or less and 50%RH or less. If unused LEDs remain, they should be stored in moisture proof packages, such as sealed containers with packages of moisture absorbent material (silica gel). It is also recommended to return the LEDs to the original moisture proof bag and to reseal the moisture proof bag again.

SAFETY INFORMATION

The T5 and its components can not be mechanically pressed.
Correct electrical polarity needs to be observed.
Ensure the power is adapted to operate the total load.
Installation must not damage the conducting paths on the circuit board.
Parallel connection is highly required as a safe electrical operation mode.
Pay attention to ESD precautions during assembling.
Assembly of LED modules includes power supplier must be appropriately.
When installing on metallic or other surface, an electrical isolation point between strip and the installing surface is recommended.
Only qualified persons allowed to operate installations.
Damaged by corrosion will not be a materials defect claim. It is the user's responsibility to provide a suitable protection against moisture, condensation and other harmful elements.